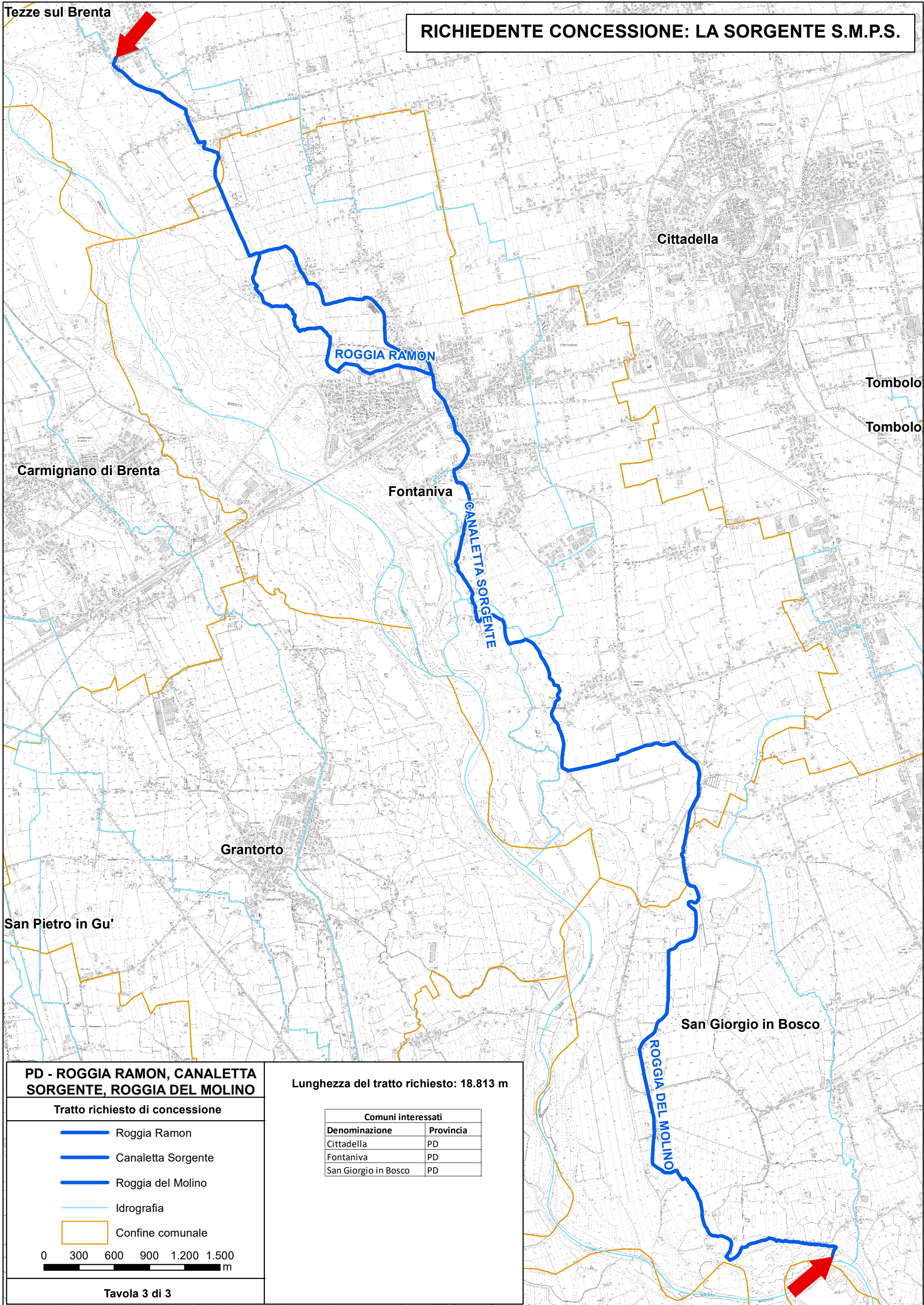


Tezze sul Brenta

RICHIEDENTE CONCESSIONE: LA SORGENTE S.M.P.S.



ROGGIA RAMON

Cittadella

Tombolo

Tombolo

Carmignano di Brenta

Fontaniva

CANALETTA SORGENTE

Grantorto

San Pietro in Gu'






San Giorgio in Bosco

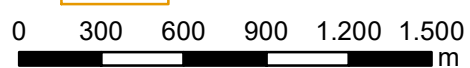
ROGGIA DEL MOLINO

PD - ROGGIA RAMON, CANALETTA SORGENTE, ROGGIA DEL MOLINO

Lunghezza del tratto richiesto: 18.813 m

Tratto richiesto di concessione

-  Roggia Ramon
-  Canaletta Sorgente
-  Roggia del Molino
-  Idrografia
-  Confine comunale



Comuni interessati

Denominazione	Provincia
Cittadella	PD
Fontaniva	PD
San Giorgio in Bosco	PD