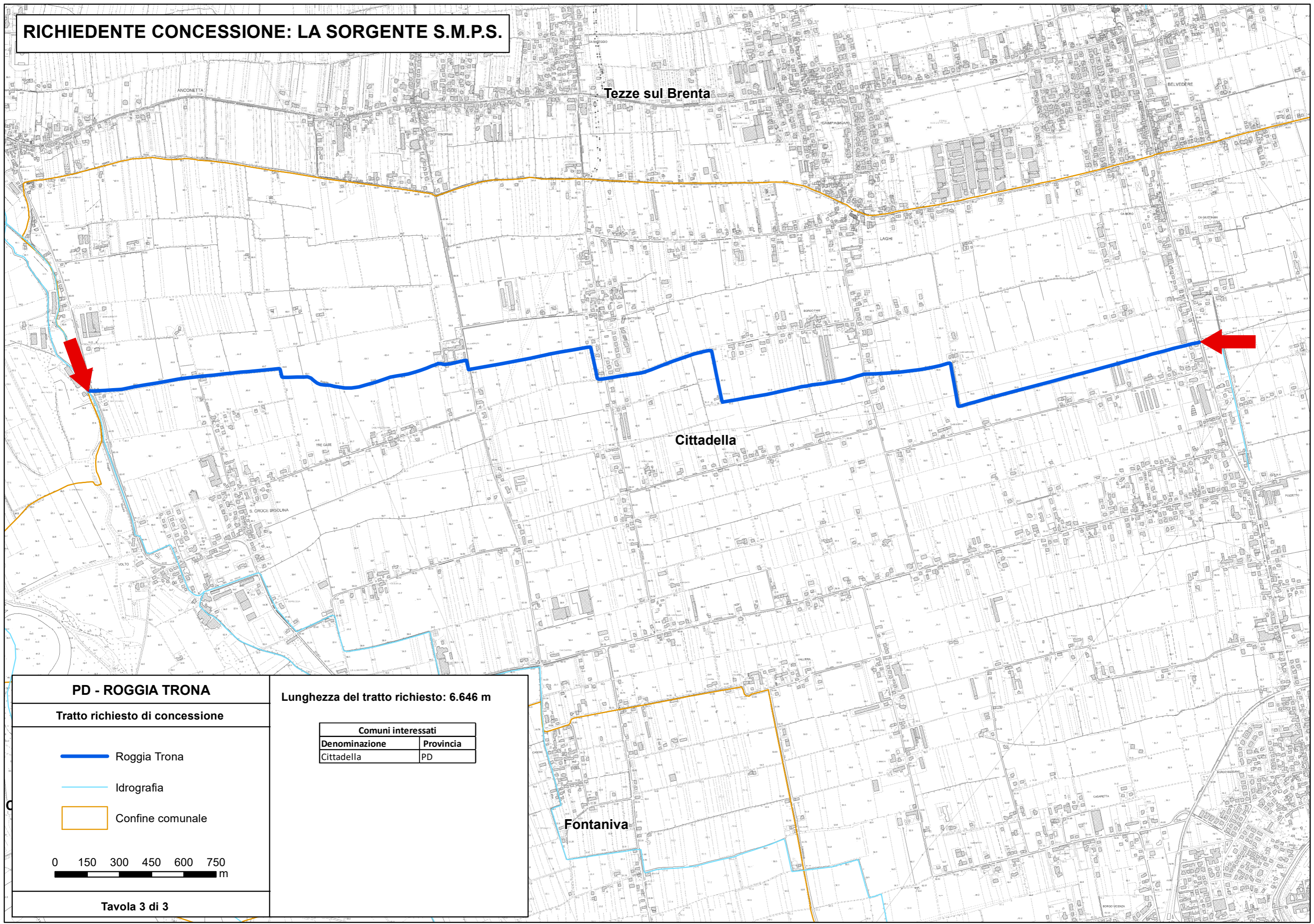


**RICHIEDENTE CONCESSIONE: LA SORGENTE S.M.P.S.**






Lunghezza del tratto richiesto: 6.646 m

Comuni interessati	
Denominazione	Provincia
Cittadella	PD

**PD - ROGGIA TRONA**

Tratto richiesto di concessione

-  Roggia Trona
-  Idrografia
-  Confine comunale

0 150 300 450 600 750 m